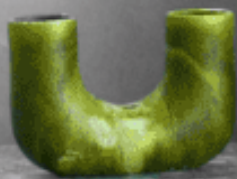


LIGHTING



ACOUSTIC LIGHTING

In partnership with
ACUSTICO
LIGHTING



1300 498 268 | ENQUIRIES@ACOUSTICAPROJECTS.COM.AU
GROUND FLOOR, 6A NELSON STREET, ANNANDALE NSW 2038



**Acoustica
Projects**

KEY BENEFITS

- Convenience - sound management and light incorporated in the one system
- Space-saving - combined in one unit to reduce clutter and save space
- Versatile - versatile choice for a variety of options

APPLICATIONS

- Restaurants
- Boardrooms
- Home
- Office
- Meeting rooms
- Hotel
- Retail stores
- Music venues

DESCRIPTION

Acoustic lights are a type of lighting fixture that incorporates sound-emitting elements into their design.

These lights are designed to provide both illumination and absorb sound in a single unit, and are often used in settings where both light and sound are needed, such as in clubs, bars, or music venues.

FEATURES

- Low VOC properties
- Award winning designs
- Cuts up to 30% reverberation
- Create a calm ambience in the room
- Global-GreenTag Certified materials used
- Locally Manufactured in Australia
- LED light source
- Minimise material waste



SCORE AND TEST RESULTS

The effectiveness of adding an acoustic lighting product has been investigated in two (2) separate research and sound level testing tests. The sources of information used were as follows:

- **AS/NZS 2107:2016- Acoustics**—Recommended design sound levels and reverberation times for building interiors
- **WELL Building Standard v1 2017**, International WELL Building Institute
- **WELL Performance Verification Guidebook, v1, 2016**, International WELL Building Institute
- **ISO 3382:20091**, Measurement of room acoustic parameters – “interrupted noise method”.

Independently Tested By:	Product Tested:	Results
Resonate Acoustic Consultants	x 2 Opera 900mm and x 1 600mm pendants	<p>Reverberation time measurements were conducted generally in accordance with the "interrupted noise method" described in ISO 3382:20091.</p> <p>Three reverberation times and two source places were used in the measurements.</p> <p>measured decay times for every source site. Two days of measurements were conducted, the first without any acoustic treatment and the second with the Acustico lights in place.</p> <p>The outcomes were then mathematically averaged to produce the reported outcome.</p>
Building 4 Impact (B4I)	900mm Round Punk Light	<p>Australian Standards AS/NZS 2107:2016 Acoustics and the WELL Performance Verification Guidebook v1: Test for Building Interior Noise Levels served as the foundation for the testing procedures and tools.</p> <p>The outcomes of the tests conducted in the buildings' original circumstances and the tests carried out after the lighting product had been installed in the same area were compared.</p> <p>According to the results, the device may cut down on background noise and mid-frequency noise in the surroundings by up to 45% and up to 30%, respectively.</p> <p>All tested frequencies saw some degree of sound attenuation following the introduction of the substance. This indicates that the product may help with sound absorption in different constructed situations.</p>



DESIGNS, COLOURS & SPECIFICATIONS

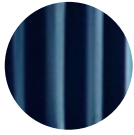


MUSICA II

SMALL OPERA PENDANT - 250MM



light grey



steel blue



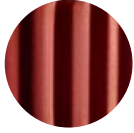
dark olive



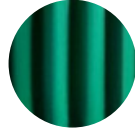
mustard



purple



rouge



vibe green



burnt orange



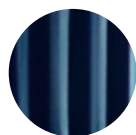
Specifications

Input Voltage	230v
Suspension Canopy Colour	Champagne
Cord Colour	Light Grey
Suspension Weight	<1kg
Dimmable	Yes
Globe Replacement	G125 LED Filament Bulb, 8W
Globe Lifespan	25,000 hours
Luminous Flux	820lm
CRI	>90
Profile	Opera
Diameter (mm)	250 - Small
Light Source	Bulb E27 240v
Light Temperature (Kelvin)	3000 Warm

MEDIUM OPERA PENDANT - LED - 600MM



light grey



steel blue



dark olive



mustard



purple



rouge



vibe green



burnt orange



Specifications

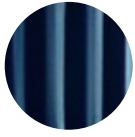
Input Voltage	24v dc
Suspension Canopy Colour	Champagne
Cord Colour	Champagne
Suspension Weight	>6kg
Driver Dimming	Resistance, 1-10v, 10v, PWM Signal or Dali
Colour Temperature	3000k or 4000k
Profile	Opera
Diameter (mm)	950 - Large, 600 - Medium
Shape	Round, Wall, Linear or Custom
Light Source	LED, Bulb E27 240v
Light Temperature (Kelvin)	3000 Warm, 4000 - Office/Education

MUSICA II

MEDIUM OPERA PENDANT WITH BULB - 600MM



light grey



steel blue



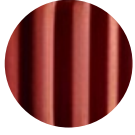
dark olive



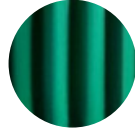
mustard



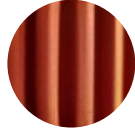
purple



rouge



vibe green



burnt orange



Specifications

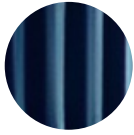
Input Voltage	240v
Suspension Canopy Colour	Champagne
Cord Colour	Light Grey
Suspension Weight	<3kg
Dimmable	Yes
Global Replacement	G125 LED Filament Bulb, 8W
Global Lifespan	25,000 hours
Luminous Flux	820lm
CRI	<90
Profile	Opera
Diameter (mm)	950 - Large, 600 - Medium
Shape	Round, Wall, Linear, Custom
Light Source	LED, Bulb E27 240v
Light Temperature	3000 Warm, 4000 Office/Education
Dali Driver	Available if requested

MUSICA II

LARGE OPERA PENDANT - LED - 950MM



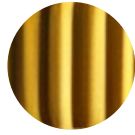
light grey



steel blue



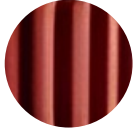
dark olive



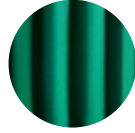
mustard



purple



rouge



vibe green



burnt orange



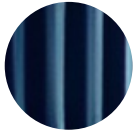
Specifications	
Input Voltage	230v
Suspension Canopy Colour	Champagne
Cord Colour	Champagne
Suspension Weight	>10kg
Dimmable	Yes
Globe Required	4Watt or greater if required, LED filament, 2700k for warm white to 4000k for cooler DO NOT USE HALOGEN GLOBES
Profile	Opera
Diameter (mm)	950 - Large, 600 - Medium
Shape	Round, Wall, Linear, Custom
Light Source	LED, Bulb E27 240v
Light Temperature	3000 Warm, 4000 Office/Education
Dali Driver	Available if requested

MUSICA II CHANDELIER

MEDIUM OPERA CHANDELIER - 600MM



light grey



steel blue



dark olive



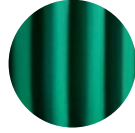
mustard



purple



rouge



vibe green



burnt orange



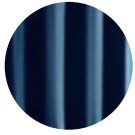
Specifications	
Voltage	24v dc
Input Voltage	230v
Suspension Canopy Colour	Champagne
Cord Colour	Champagne
Suspension Weight	<8kg
Driver Dimming	Resistance, 1-10v, 10v PWM Signal or Dali (please specify)
Colour Temperature	3000k or 4000k
Profile	Opera Chandelier
Diameter (mm)	950 - Large, 600 - Medium
Shape	Round, Custom
Light Source	LED, Bulb E27 240v
Light Temperature	3000 Warm, 4000 Office/Education
Dali Driver	Available if requested

MUSICA II CHANDELIER

LARGE OPERA CHANDELIER - 950MM



light grey



steel blue



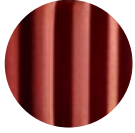
dark olive



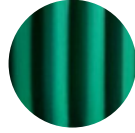
mustard



purple



rouge



vibe green



burnt orange

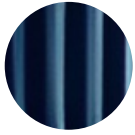


Specifications	
Voltage	24v dc
Input Voltage	240v
Suspension Canopy Colour	Champagne
Cord Colour	Champagne
Suspension Weight	<10kg
Driver Dimming	Resistance, 1-10v, 10v PWM Signal or Dali (please specify)
Colour Temperature	3000k or 4000k
Profile	Opera Chandelier
Diameter (mm)	950 - Large, 600 - Medium
Shape	Round, Custom
Light Source	LED, Bulb E27 240v
Light Temperature	3000 Warm, 4000 Office/Education
Dali Driver	Available if requested

OPERA WALL LIGHT - 1000MM



light grey



steel blue



dark olive



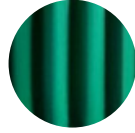
mustard



purple



rouge



vibe green



burnt orange



Specifications	
Input Voltage	240v
Weight	<5kg
Driver Dimming	Resistance, 1-10v, 10v PWM Signal or Dali (please specify)
Profile	Major, Minor
Length	1000mm
Height	180mm
Light Source	LED
Light Temperature	3000 Warm, 4000 Office/Education
Dali Driver	Available if requested

BRUTALIS LINEAR

BRUTALIS LINEAR LIGHT - 1800MM



Specifications	
Input Voltage	240v dc
Weight	<10kg
Remote Driver Dimming	Resistance, 1-10v, 10v PWM Signal or Dali (please specify)
Length	1200mm, 1800mm
Light Temperature (Kelvin)	3000 Warm, 4000 Day (comes as standard unless specified), Turntable White - matches Circadian Rhythms
Dali Driver	Available if requested

