

# CUBE™

VERSATILE  
ACOUSTIC PANEL



1300 498 268 | ENQUIRIES@ACOUSTICAPROJECTS.COM.AU  
GROUND FLOOR, 6A NELSON STREET, ANNANDALE NSW 2038



**Acoustica  
Projects**

## KEY BENEFITS

- Made in Australia
- Highly durable, providing long-term stability and performance
- Light-weight and easy to handle
- Custom colour printing available

## STANDARD FIRE RATING

IAS5637.1, AS ISO9705-2003. Group 1, (SMOGRArc): <math><100\text{m}^2/\text{s}^2</math>.

## VOC EMISSIONS

Low VOC and CDPH compliant - <math><0.092\text{mg}/\text{m}^3</math> (7 days)

## APPLICATIONS

- Air-conditioning units
- Multipurpose halls - e.g., assembly, scout, school, university
- Theatre & Cinema
- Studio booths
- Hearing testing booth
- Classrooms
- Music Practice area
- Meeting rooms
- Offices
- Workstations
- Sports areas
- Indoor swimming pools
- Factories & machine shops
- Noise absorption in plant rooms

## DESCRIPTION

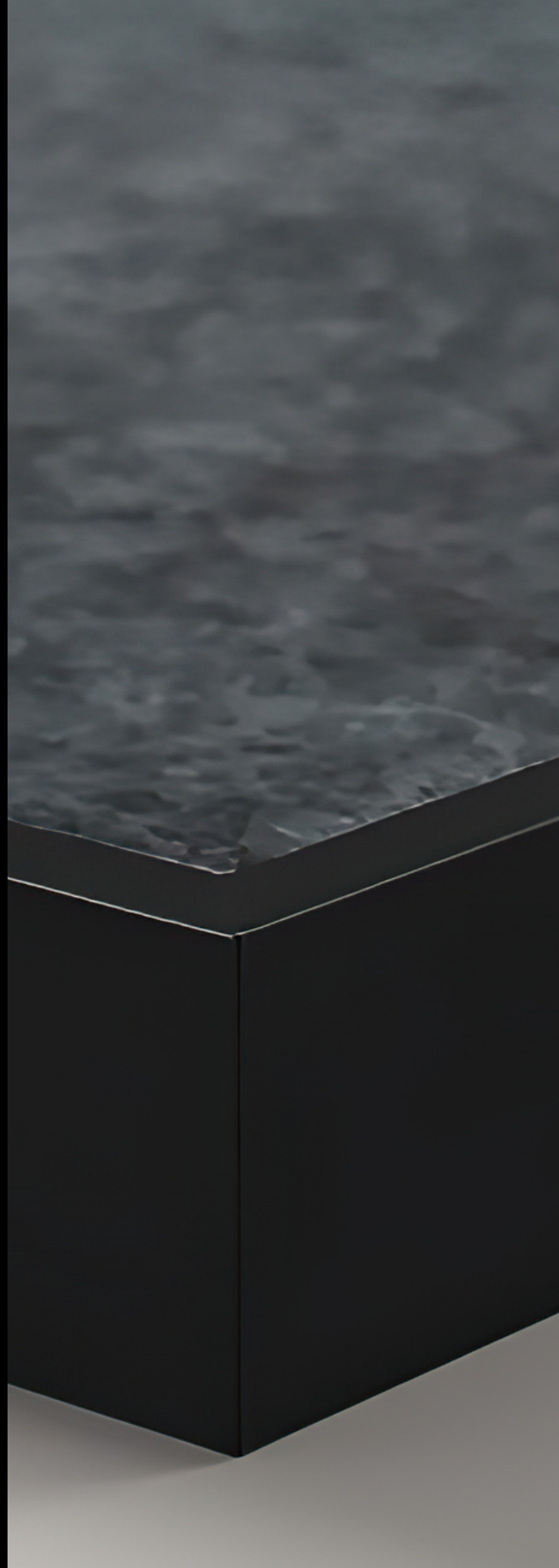
---

Cube™ is the ideal solution to reduce reverb in most situations - with 23 solid colours to choose from and can be cut into various shapes, it combines acoustic requirements and personalised aesthetics.

# FEATURES

---

- Design flexibility without the need for edging or capping
- Design possibilities limitless with custom cutting
- Safe, non-toxic and non-allergenic
- Does not contain any Red-List chemicals
- Our products are manufactured using 100% polyester fibre and contain a minimum of 50% recycled content (i.e. PET plastic bottles).
- Cube™ is Global GreenTag Green Rate level A certified. It is Red-List Free and can be used in Living Building Challenge projects.
- 
- Standard dimensions:
  - 2.4m x 1.2m
  - 1.2m x 0.6m
  - 0.6m 0.6m
- Thickness and weight:  
(for full panels)
  - 12mm - 2.4kg
  - 24mm - 4.8kg

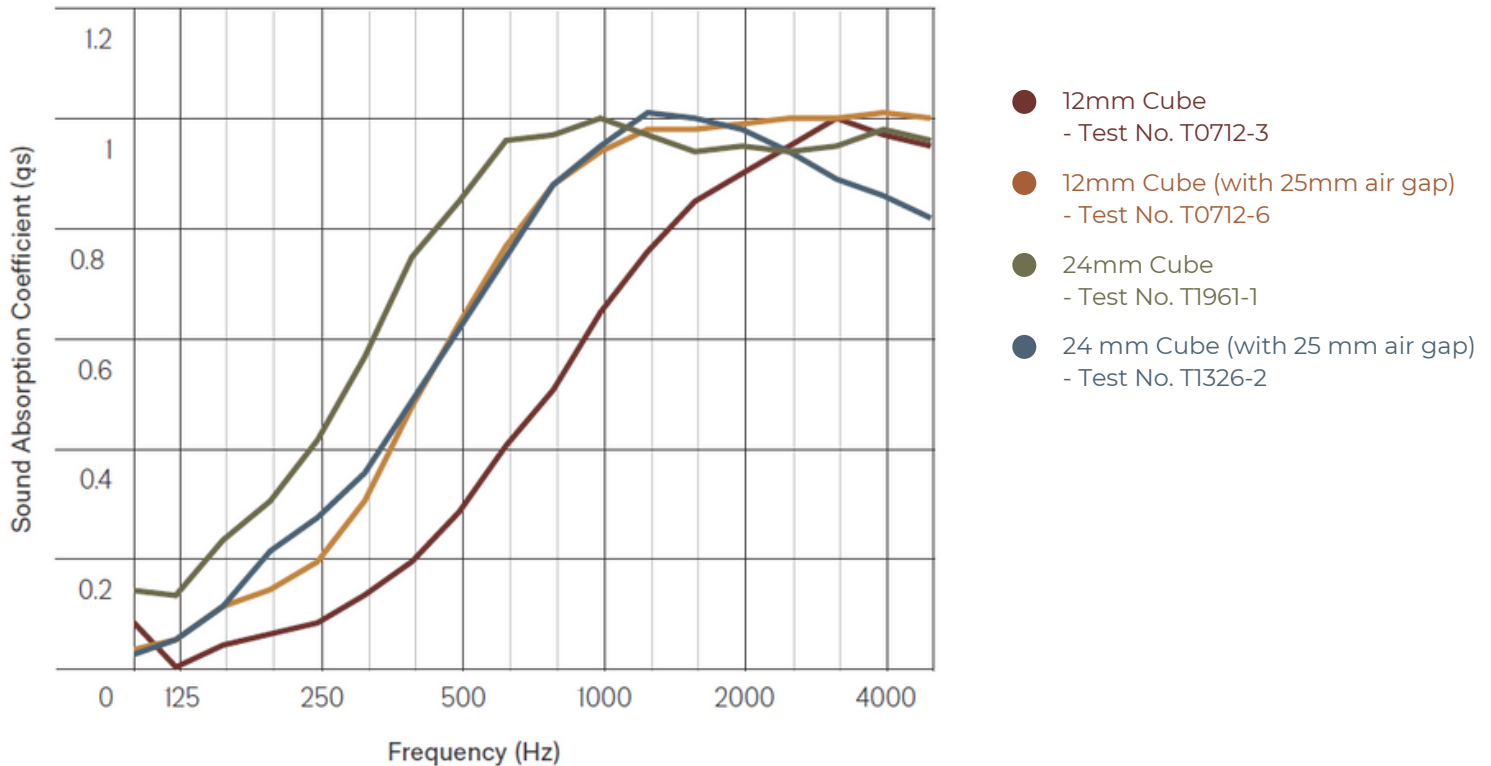


# SOUND ABSORPTION

The graph below highlights the third octave sound absorption coefficients as in accordance of ISO 354.

## SCORE AND TEST RESULTS

Frequency (Hz)	125	250	500	1000	2000	4000	NRC
12mm Cube™	0.05	0.10	0.30	0.65	0.90	0.95	0.45
12mm Cube™ (with 25mm air gap)	0.05	0.30	0.60	0.95	0.95	0.85	0.70
12mm Cube™	0.05	0.20	0.60	0.90	1.00	1.00	0.70
12mm Cube™ (with 25mm air gap)	0.15	0.40	0.85	0.95	0.95	0.95	0.80



# COLOURS AVAILABLE



rosada



cavalier



sargazo



ironbank



zenith



senado



beehive



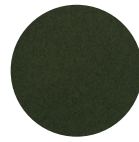
parthenon



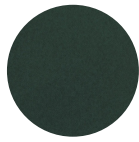
opera



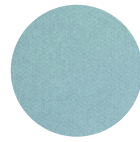
acros



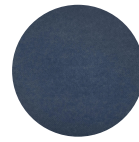
gherkin



tree house



falling water



muralla



pinnacle



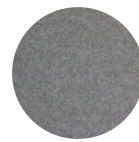
petronas



empire



herald



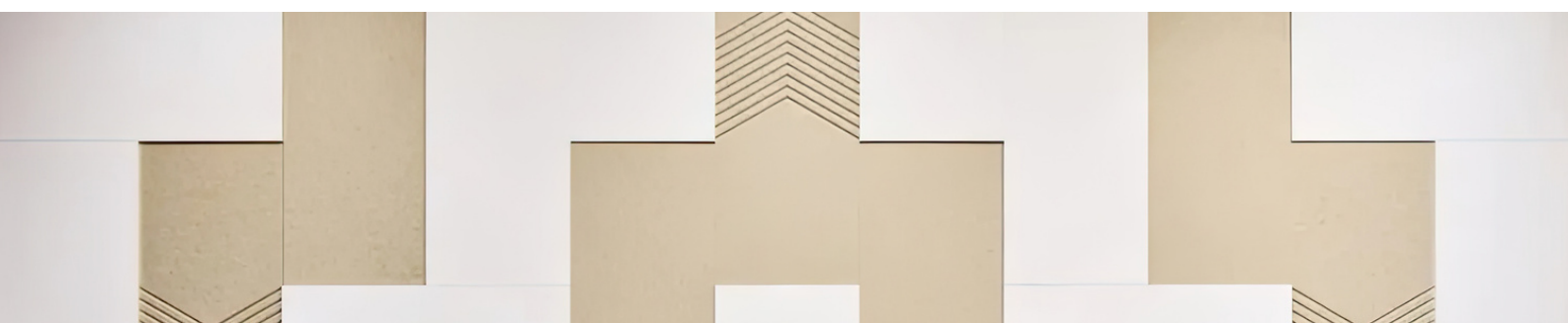
flatiron



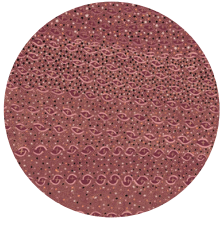
savoye



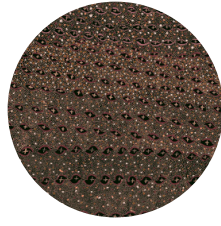
pavillion



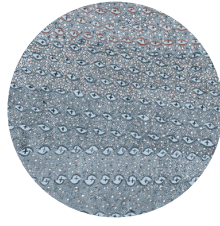
# WILLIE WESTON RANGE



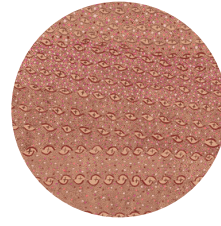
durrmu (kk)  
'berry'



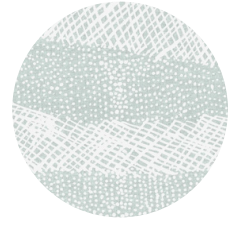
durrmu (kk)  
'obsidian'



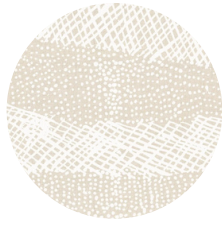
durrmu (kk)  
'pippi'



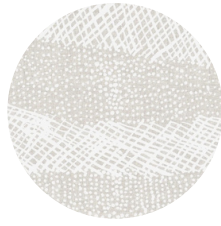
durrmu (kk)  
'terra'



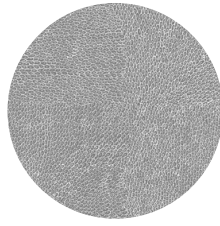
jilamara  
'inlet'



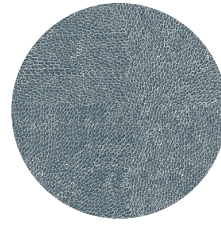
jilamara  
'sand'



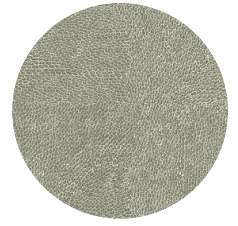
jilamara  
'stone'



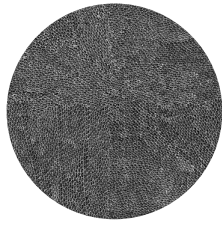
native-seeds  
'cassia'



native-seeds  
'mineral'



native-seeds  
'olive'



native-seeds  
'midnight'



pandanus  
'eucalypt'



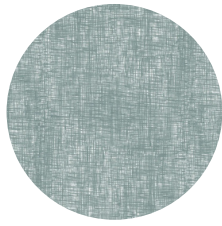
pandanus  
'stone'



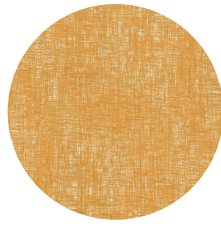
sugarbag  
dreaming  
ghost 'gum'



sugarbag  
dreaming  
'saltbush'



syaw (fish net)  
'sea spray'



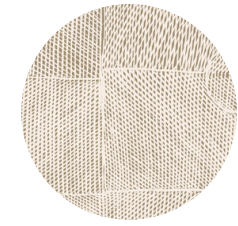
syaw (fish net)  
'woollybutt'



water levels  
'moss'



water levels  
'marine'



wak wak  
'mud flats'



wak wak  
'storm'